
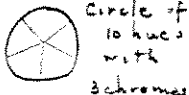
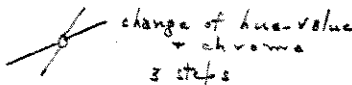


Query? Has the law of sensation only reference to color changes which include a change of luminosity? (spectro-analysis)
Does it hold when there is only a change of chroma without any change of luminosity?
In other words, is it a variable relation of two factions (value - chroma)? Will it fail when luminosity is equal throughout a color? so that only a single factor (chroma) is involved?

- May 11 I open this question to Dr. Bigelow at Pierce Bldg. M.I.T. He asks is it a new law of sensation. Considers the wave theory pretty well established - but the retinal action is debatable -(chemical, photographic or ).
- 15 Dr. Wendell lends me a D.V. spectroscope to test chroma.
- 16 Tested new yellow crayon for W.H. & Co. Tel. Mr. Gunnison it is pretty close: a trifle red, - should lean to green. 41.
(Samples and comparison of Oct. '05 crayons and May, '06 crayons appear on 41a.)
- Mr. Finlay at studio to see best models.
- May 23 Sample box of crayons still shows tendency to warm and over chromatic hues - (yellow, purple, gray)
- 10:30-1 With Miss Patrick at the Pope School-Union Sq. Somerville - meeting Mr. Wadsworth, Supt. Southworth and the teachers. Color exhibits in each grade on the walls, and I take selection from each.
- 26 5-6 Mr. & Mrs. Putnam - Mr. W.J. Edwards ----- Show Pope School exhibit, color charts, models and color tree.
Receive 2 Milton Bradley boxes for test report.
- 29 Took small color sphere and 2 small 15 colors from Clarendon St. store - \$1.30 retail.
- June 6 Mr. Burdett (Silver & Burdett) spends an hour on the color system, - seeing exhibit of 9 grades from Smerville. Give him a copy of "Color Notation".
- W & H - send new sample crayon - purple order 75 copies of book direct from me. (75)

Grade

41a.

Value	I	5 crayons	name order	pairs in design	opposites
	II	10 "	" "	three " " neighbors &	
	III	5 "	Lighter & darker values	four " "	
	IV	10 "	Scales	2 hues in 2 values	
chroma	V	Chroma	Weaker & Stronger Chromas	3 chromas of one hue	
	VI			wall paper unity -rugs	
	VII	Watercolors	review of H V C & scales	print or woven design	
	VIII	"	Objects treated in flat color - Area.	study of Jap prints & textiles	
	IX	"	3 steps selected -named written & used in a design.	design for applied art (charts)	

June 8 Rec. 5" sphere & test it. Middle red too strong in chroma and slightly light in value. Advise change & stamp on box, saying "Do not touch the colors; spin by the handle." 41.

Oct. 17 In answer to Mr. Gunnison (questioned by Mr. Leavitt.) 42a.
 Advise 1 large sphere for each school bldg.
 1 small " " " " room
 1 set large enamels " " "
 1 " small " " " 1 pupils
 1 copy "Color Notation" for each teacher.

He sends new pattern 5" sphere - and I return faulty one (June '06) - also send 10 photometer circulars.

Definite
Mental Color Images

3 Qualities or dimensions

1. Hue
2. Value
3. Chroma

Balance

Hues - hot and cold
 Values - light and dark
 Chromas - weak and strong } lack of balance
 must be compensated by
 corresponding areas

(On page 42a. there appears a clipping from the Journal of Education - Oct. 11, 1906, entitled "New Color Notation". It is a description of the Munsell System.)

Oct 18 9-10 Boston Normal School (Rice Bldg. Hall) 42.
Mr. Boyden, Mr. Poor, Miss Shute -----

1 The Color Sphere-

a spectrum of middle value at the equator - circle divided into 10 equal steps - 5 principal steps for beginners.

The Color Tree

unequal maxima of pigments - trunk of values - branches of chromas - an irregular color solid - "tuned down" to a balanced equator.

2 Scale of Hue- horizontal (a circuit tested by rotation)

" " Value - vertical (a mean & two extremes) tested by photometer

" " Chroma- central (a mean & 2 extremes) tested by new instrument

3 Charts of the color solid

Horizontal-20,30,40,50,60,70,80)decimal
Vertical-R.YR.Y.GY.G.BG.B.PB.P.R) scales

Show pupils work in 9 grades from Somerville -

" that green is not complement of red.

" " orange is an interloper & destroys balance.

Oct 24 12-1:30 Mr. Wood of A.D. Little, Chemists, 43.
93 Broad St. Sees photometer - charts and sphere. Measures velvet, and various papers for Am. Writing Paper Co.

Mr. W.	AHM			
94.5		97.		white writing papers, darker in terms of lighter-
87.5		97.		
90.	90.6	94.5	96.1	
64.		74.		yellow writing papers - in terms of white
61.5		74.		
61.	62.1	74.	74.	
74.		88		" (3 diffusers to bring readings to a sensitive register)
74		84		
78.	76.3	84	85.3	

Oct 27 Mr. George acknowledges he has not read my book - yet he has explained the system to Class A for two years. Such explanation only does harm. 43a.

29 4:30-5 Miss Patrick Tells of her teacher's pleasure in carrying out the color system in the Pope School - 43.
 Talks with Mr. Bailey, Sargent, Boyden, etc. Teacher (Miss Cheney) wants the outside steps to R & Y. I tell her { Vermilion (-) - R $\frac{2}{9^2}$
 { Chrome Yellow Y $\frac{8}{11}$

Area must be restricted because they have no balancing opposite. "Muddy colors" not necessarily dull, but unrelated - Whistler, and Jap prints are dull but related. They give no sense of mud.


The Poppy, buttercup, and dandelion are extremely small specks in great areas of middle color - We cannot cover our walls or our dress with them.


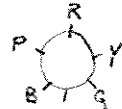
Oct 31 Studio - 3:40-4:30 Miss Fisher, Miss Aborn, Miss Shute and Mr. Poor - Discuss kindergarten phase of the new color system.

1. Explain color solid



Show tree and sphere sections-charts.

a. Prove  is wrong- both as to total balance and to opposite colors.

b. Show   is right.

c. Show scales of Value)

2. Somerville grades I-IX Results achieved in these schools - Hue) related Chroma)

1 Fixed basis - middle colors first - lighter and darker next weaker and stronger last Materials sphere - 5 cards 5 crayons

2 Crayons not water colors - in grades 1-5 " - 15 cards 15 crayons

3 Water Color obedient, when a standard is memorized and understood

Why give children colors they cannot use in after life? Colors that are "ill-bred" and "swear" - tabooed by colorists and people of taste - color totally unrelated, uneducational-savage and atrocious. Would we for a moment permit its analogue in music?

Objected- "How can we do this without papers? (Miss A) 44a.

Colors not strong enough to impress children. (Miss F.)

Can we not find BG to equal our red?

(I tell of Prof. Gill's remark)

Do not some need stronger colors than others?
(champagne - siren -stunning blow - not for children)

"We teach a color for its thrill - not for relation.

(Is C or G sounded to give a thrill?)

(or to study relation of musical sound)

"When I look at intense red, it thrills me.

(Suggest association with fire - blood and danger.)

"Now what do you say to a ruby - a deep blood ruby?

(Show it is R/Y a complex color sequence-

not red R alone - also show the same is true of a buttercup in sunlight)

(No child can adequately represent either of them.)

Nov 1 Design box of Water Colors- 5 middles) 2 neutrals 45a.
3 maximas)

2 Miss Nye and Miss Drexel (H.K.Turner Co) see 45.
paintings -

4-5:30 Mr. Gunnison - brings Mr. Kortzbone -
(Favor, Ruhl & Co. Chicago)

Sees spheres, photometer, chart (60) and Somerville course. Accepts measured color as beautiful color. (I give Mr. G. placard for display sphere.) Wants western agency for my book - from Ellis & Co. Asks if a box of water colors should not be made for me?

6 2:30-4 Students come to see studio and paintings. Afterwards discuss color -
Miss Lewis (in Miss Fisher's school) asks
"can young children distinguish the middle colors- do they not need strongest contrasts -
Could you not give them lighter colors (brighter)?"

12 2 p.m. At Mr. Howland's desk - 84 Wash. St.
Discussed Color Box - Told of lack of circulars and a damaged sphere. Took sphere - crayons, balls and cards (small) - 3 spheres damaged.

3 p.m. Mr. Horace K. Turner at studio -
 Sees spheres - balls - circulars - tests of
 balance on machine -
 Asks - what is a complementary -
 " is gray in pigment mixture equivalent to
 white in light mixture
 " have you pushed it - made a good thing of it-
 (Prangs are stuck on those books - not a
 success.)
 " can you measure the light of a room - and
 give a scheme of walls, pictures and
 decorations that are harmonious?

Mr. T. tells of his color prints from England - 45a.
 Wants to be able to see direct from a distance
 that the rooms and their decorations shall be
 beautiful.
 Thinks Bailey a "wonderful man" - Knows Hall,
 Daniels and Sargent.

Nov 13 (Sunny with clouds) N.A.S. Class A and 46a.
 Teachers' Class - 10:30-12

I Color Estimates and Measures

-personal : without standard:subject to change
 impersonal : a fixed " :exact, reproducible

How color is measured

Colored light - by wave-length
 " pigments- by photometer & other instrments
 (dangers & allurements of musical analogy)

A Filing cabinet - 100 drawers) classed by
 white 100 to black 0) Value

The Color Tree

Trunk-a scale from black to white
 Branches-scales of strength from Maxima
 to neutrality

Complementary colors.

First the theory of 3 sensations in
 retina - Red, Green, Violet Blue.

(Why pigments cannot illustrate well)

Yellow = Red+ Green

Blue = Green+ V.Blue

Purple = V.Blue+ Red

The complement - what is wanting to
 produce balance - or pigment

"balance" (whitelight-equivalent-
 (Neutrality.

Red - complement is Blue Green

Green- " " Red Purple

V.Blue- " " Yellow

Completed color tree- (all its leaves) an
 irregular solid.

Color Sphere - turned out of the color solid
 (mountains razed to lowest valley)
 tested for balance.

Idea of Middle Colors as a starting point in education.
 Illustrated by 9 grades of the Pope School.

Nov 20

II Color Groups

Review:



spectrum

Metcalf's 46.

landscapes
 Gririn prints
 Jap prints-
 Tapestries

2 dimensions fail: the 3d dimension indispensable.

Mrs. Franklyn's theory

color blindness

Helmholtz diagram

"white light in a color."

Pigment action illustrated by
 colored glasses - surface light-
 & deep light (double stained)

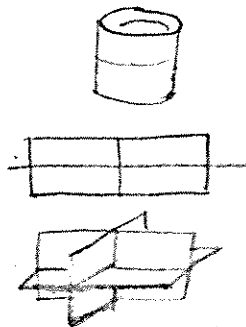


Color Paths V- change of value) color steps grasped
 H- " " hue) by a child as
 C- " " chroma) scales

spectrum too complex for a child { V & H / change of hue & value
 V & C / " " & chroma
 V, H. & C \ " " & value

Color Records

- A chart of the color solid (mercator) significance of each field.



Verdure, Tapestry
 Tintoret's Glass



"Harmony" and its laws may be discovered by such records and expressed in definite form.
 Present color terms useless.

Illustrations from Pope School - Somerville - taken from Jap prints and adapted to designs for Wall Decoration.

Nov 27 -

- Dull, gray day.- N.A.S. Class A- Teachers' Class & 47a.
 III. Practical Color Work Portrait students.
 Decorative - Picturesque

Review

Steps in creating a definite color-image(mental).
 Ability to memorize - imitate and record colors.
 Balance - retinal ease - freedom from strain and fatigue -

Beautiful Color

Pleasing by a sense of proportion - Balance
(too hot or too cold H
Unbeautiful color (" light " " dark V
(" weak " " strongC

Middle gray the balancing point-
compensations by area - V & C

Pigments

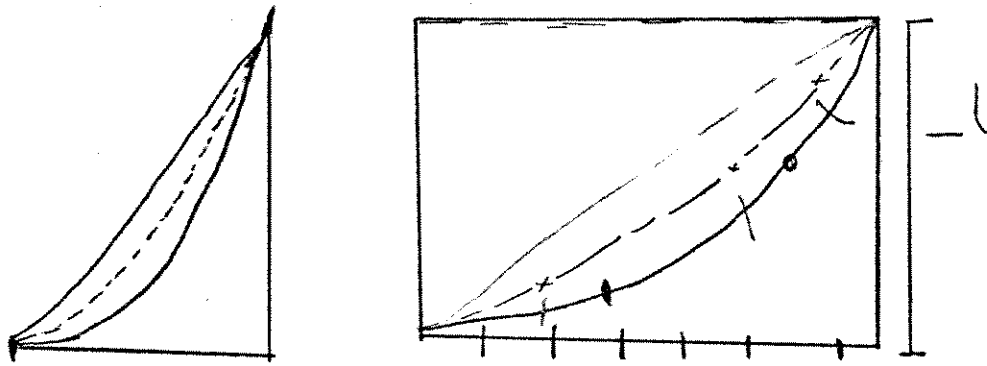
not light: the practical color agents.
Behaviour of pigments in oil, pastel and
water color
They act by absorption - not transmission
The palette set as a practical scale of
light and color

Decorative and Picturesque Treatments

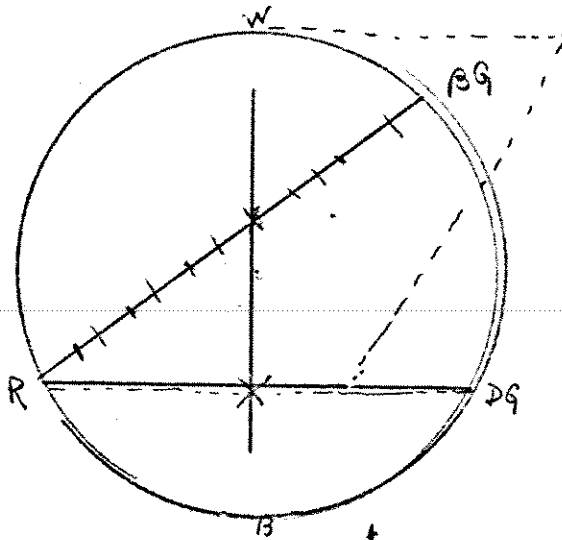
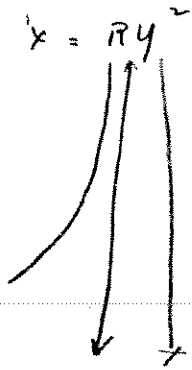
1 Flat - to please the eye - Rug
2 Illusion- to please the mind - Portrait
Archaeology traces a progression from 1-2
Education in color should do the same.
Perspective & chiaroscuro and Textures,
advanced ideas
Flat scales and application for beginners-

Dec 8 Society of Chemical Industry 47.
Demonstration of "Hoechst" process of color
photography at 77 Sumner St. - 8 P.M.
Mr. Gagnebin, Fish, Turner, Wood, Prof. Gill-Talbot.

12 Report on Favor Ruhl & Co. 106 East Lake St.
Chicago - branch of Home office - 54 Park Pl. NYC.
Fire Nov. 16, 06 - from adjoining bldg. - small
loss - Ins. \$21,000. Estimated worth \$60,000-
\$70,000 - pay promptly - Started in March, 1904.
The business was commenced under present style
in 1893 - The firm consisting of Conrad H. Ruhl,
Irving T. Favor, and Charles Mayne, special partner
for \$10,000 - to Jan. 1, 1903.
Ruhl had previously been of the United Refiners'
Export Oil Co. and Favor had been in the employ
of J. Marsching & Co., 27 Park Pl., whose artist
material dept. they took over.
On Dec. 31, 1901 Favor withdrew and John Hobbs
and William Mayne were admitted. Chas. Mayne be-
coming a special partner for \$20,000 to Jan. 1, '07.
They are well regarded personally, and the business
is believed capably managed. They opened a branch
in Chicago, Ill. during 1904, and are believed to
have made some money. Locally they are in full
credit for their wants, and meet their objections
promptly. Statement is accepted as correct - though
liabilities are regarded large in proportion to
assets.



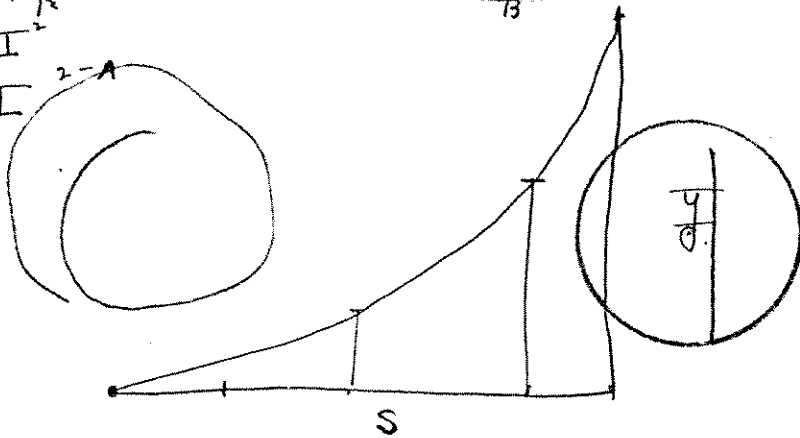
47a.



$$S = R \log_2 I$$

$$S = R I^2$$

$$S = R I^{2-A}$$



At 'Mr. Lawrence' desk - M.I.T.

Ratio of chroma to Value - involves law of sensation -
 simple " " " without " - does not " " "

Dec 18 Mr. Bidwell of Favor Ruhl -
 Comes with Mr. Putnam (Mr. Currier at studio)
 To ask questions about my system -
 1 How to put it into schools -
 I tell him it destroys nothing - only unites and explains previous methods. Begin with the middle colors - instead of extremes. Definite measures in place of guess-work. Use gray paper, not white.
 2 Expense
 I advise trying it in a strong school first, until supervisor gains confidence - then spreading it. Crayons, cards, spheres - for 6 grade - then water colors.
 3 Best for it to come through the Normal School-Circuit for Lecture course - \$100. each city - get clubs to join with the teachers - How to meet free time? - Wants Kansas, Nebr. & Col. added to his territory.

Dec 19 Award of prizes for Color Note books at N.A.S. 48a.
 (Here follows a description.)

Jan 23 1907 Tested 2nd set of water colors. 48.
 Yellow and blue are O.K.
 Green and Purple " still too dark.
 Red has been darkened too much and is slightly yellow.

Jan 26 27 Mr. James Hall at studio.
 Sees charts for the first time and photometer-
 Says Sargent cannot find chroma in the dictionary-
 Intends to use my system in 1/3 of city - and Ross in other 2/3. Acknowledged he is in "the infant class as to color".

28 Mr. Putnam - to suggest getting rec. from Dr. Balliet. Mr. Gunnison - to talk over plan for a pamphlet on "suggestions for the use of the Munsell Crayons and Water Colors" - Edition of 20,000 - to cost about \$250. "Cheaper than a man's time to talk to the supervisors and teachers. Cannot understand 152 small cards given away. Says I had only 5 large spheres - Will have his ad. in the Centre of Vision - mention the Munsell colors. Must have water colors box (wholesale for 27 cents) of 10 colors and pamphlet ready before the Cleveland meeting.

Feb 6 Mr. Howland and Mr. Kimball at studio 4-5:30
See MSS of new color pamphlet "Results" - and
color plates - Discuss processes to reproduce
the plates. Agrees to give me 5000 of each
plate in return for use of my book plates (copy-
righted) - Edition of 25,000 (Said Haney's
plate - lithographic - cost him \$600.)
Will go right ahead as soon as I give him the
originals.

11 Third set of Water Colors to test. 49.
R - G - P (Y & B already O.K.)
R too purple and gray
P too dark still G.-O.K.

14 Mr. Gagnebin in train - Says Carter's chemist
uses a colorimeter for the inks - thinks my
photometer might be better for him. Also
allows me to use his name with Forbes Co.
(Mr. Shepley).

Mr. David M. Small for the Forbes Litho. Co.
to figure on 3 plates - for new circular "Results"
100,000 - \$15-\$20 per 1000 - 4x5 $\frac{3}{4}$ work - -
4 colors.

Miss Patrick comes to see the new circular -
Thinks teachers would pay 10 cents for such
examples.

19 Mr. Sterne of Geo. Wacker - Lithographers - to
figure on 3 plates.

20 At Pope School - Somerville, with Miss Patrick,
Mr. Sargent, Mr. Leavitt, Miss Patterson and
Miss Whittier.
Saw work in several grades - also block prints.
Mr. S, claims the BG complement to R will be
different in Palette Mixtures - from that obtained
by Maxwell discs - That the vibrations on the
retina - in the first case are subtraction
- " " second " " additions,
Quotes C. H. Judd - psychological laboratory -Yale.
who says there is more B & G in nature than R
I ask why daylight is white? if above is true.

26 Delivered 3 plates to Geo. H. Walker Co. 211 High
St.- Proofs to be submitted in 3 weeks - and
printing done in 3 more -

28 Took MSS of new "Results" to Mr. Gilman.

Sargent quotes Judd that the complement of R
obtained by Maxwell discs will suffer a change
if made on the palette. I say yes - it will

49a.

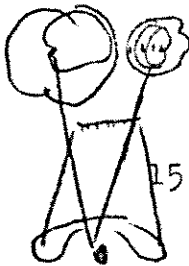
vary with every individual and cannot be measured accurately as by the discs. Amount of each pigment - method of mingling-length of manipulation - all effect the result. To make any measure valuable - it must be definite and related to a standard.

Mar 12 Chroma - See page 1 May 1904
Balance on two levels -

Diagonal of V (geometric)
C (arithmetic)

Handwritten initials in a circle

50.



15 At W & H's - Delivered MSS of "Children's Studies in Measured Color" - and decided on enamel colors for Water Color Box (7 & 10 pan) Figure on 25,000 booklets (cover - 8 pages \$282. by G.H. Ellis & Co. (3 color insets furnished)

18 Called at Geo H. Walker & Co. 211 High St. to see proof of Color plates - 9 stones already printed.

19 Students at N.A.S. (Public School Class) make tests of middle gray with the photometer. Sargent calls.

22 4-5:30 Miss Patterson of Arlington Heights. Sup. of Drawing with Miss Potter and Miss Whitter under Mr. Sargent. Sees large and small charts, photometer, and tests chroma. Thinks of letter as growing "lighter". Uses intensity for chroma. Feels much interested and has made charts for her teachers (20 lessons) - but has only crayons to work with. Thinks 3-5 years needed to incorporate it in the school. I impress need of spheres, cards, and books to aid the teacher's imagination.

Mar 11 At W & H factory in Malden 3:45-5:45 with Mr. Howland and Mr. Anderson - Met Mr. Perry. Tested new water colors -

50a.

Less white (silesia) the better. Ground should furnish white. First full brush-full should match the enamel cards.

Gamboge not the base for Y.
Red oxide good for R.

Took two boxes from factory - to design upon

MUNSELL

7 color + brush

10 colors
no brush

WATER COLORS

Apr 9 3:30-5:15 At Studio- Dr. A. E. Winship
(editor Journal of Education) and Mr. Putnam.

51.

Show photometer, color tree, sphere, charts -
large 60 H & V sets-, mask -to find complement-,
discs - to disprove old theories.

Answer questions, why Bradley is wrong-
is this patented?
what can Prang & "the others" do?

10 Sample of Middle Gray furnished W & H.
Mr. Howland at studio with Dr. Winship's
appreciation. Deprecate his placing me in line
with Maxwell, Helmholtz and Rood - but otherwise
think it strong.
(O.K. on water colors except purple:-too dark
and too weak.)

51a.

Mass. Board of Education,
Boston, April 10, 1907.

Wadsworth Howland & Co., Inc.

Gentlemen:- It was a rare privilege to spend a half-day
in the studio of A. H. Munsell, enjoying his unfolding of
the development during the last fifteen years of a scienti-
fic color scheme by which pigment colors can be recorded,
remembered and reproduced with almost geometrical precision.
I had read his book, "A Color Notation," but not until I
had looked into his photometer, and followed the develop-
ment of his color globe and color charts, did it appeal to
me as an important discovery. Unless all signs fail,
Mr. Munsell has added a step in the scientific development
of Maxwell, Helmholtz, and Rood. It is nearly fifty years
since Maxwell challenged the theories of Brewster. Helmholtz
improved upon Maxwell's presentation of the case, and in
1879 Rood's "Modern Chromatics" opened up a new order of
things; but it has been left to Munsell to give a complete
scientific development of a measured color system.

Yours,
A. E. Winship.

15,000 color plates - 5000 plate 1) deposited with
" " 2) Ellis & Co. for
" " 3) new edition of
book.

May 2 Ordered a stereo of the first seven pages of the
pamphlet @ \$7.00 for the set.

Urged to speak again by Miss Sargent and Miss Paterson. I said that the subject was too important to be nibbled in odd moments: should be studied from my book. That if the city of Boston deemed it of any value - they should have me give as expert - 3-5 lectures to all the teachers and at proper compensation. That invitations came from all sides to speak: even from distant cities: and that I could not respond gratuitously to them all.

(On page 52a there appear diagrams representing the photometer, color tree, spheres, etc. shown on May 3.)

52a.

May 7-13 Cleveland trip - left N.Y. 10 P.M. Wed. for Pittsburg: - spent a.m. at Carnegie Inst. and too 2:30 for Cleveland. 8 p.m.(9) reception at Art school.

53a.

Friday 1:45-2:15 "A new color system - with demonstration. Hall of Chamber of Commerce. Discussion until 5:15.

At this Dow, James Hall, Miss C- , D'Hancy, Mr. Stark.

Why is orange omitted?

Can the child react to such quiet color?

What is "raw color"?

Is nature "seldom right"?

Must we segregate children from nasturtium and sunset?

5:30-8 Dinner at Holladen to Mr. B. and self - by 20 former N.A.S. graduates now teaching.

Sat. p.m. - Automobile (Mr. Wordwell's) tour of parks and Wade ---

Sat 7 p.m. Dinner at Miss Norton's.

Sun. 1:30 " " Mrs. Stevenson Burke's

7:40 train for home.

Put up at Union Club by H.H. Johnson.

Mr. Royal B. Farnum and Miss Georgie Norton arrange everything.

May 15 9* 9:30 Miss Amy Roberts (Minneapolis Supt. of Art) calls with Mr. Putnam. Thinks the

53.

new Munsell water colors a great gain for teachers. Asks at what grade the system can be introduced. I quote Burnham, Miss Haven and Bailey. She will at once take it up with High School teachers - and carry it further down as rapidly as possible and safe.

Sees no reason why both strong and middle colors may not be shown at the start - side by side.

Questions whether sphere is too big an idea for beginners?

"Your book gives me a handle to things I felt or knew- yet had no practical way to use in teaching. As I read it seems perfectly right and natural. (Goes out to see Pope School teachers.)

Miss Patrick thinks her rather ignorant on color matters.)

May 17 Wrote Miss Cheney and sent back pose, landscape and stamped color work.

Miss Sharpe and M- ---- of Teachers' Class at N.A.S. bring back my school exhibit and see canvasses.

May 27 Address before Eastern Ass'n of Physics Teachers- Brookline High School - 2:30-4 with spectrum and color mixing. Prof. Duff, Mr. Black, Gilley, Miller.

June 3 Mr. Miller brings me the sphere and sees my color discs - color glasses, etc.

wheel cir. $210^{in} \times 5280 (25^r \text{ rev. per min.})$

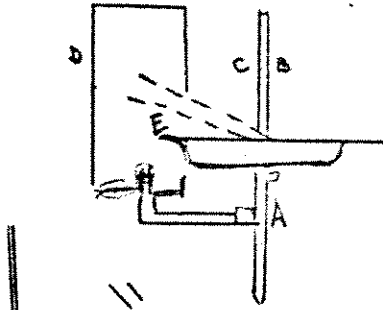
Locomotive wheel turns from 20-30 times per min.

Can rotating color card (chroma test) serve over another ground as speedometer?

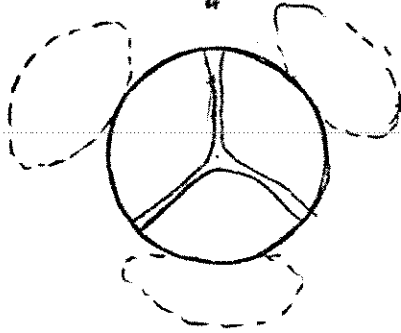
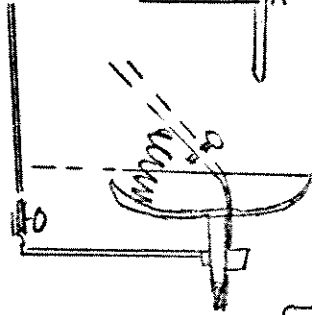
June 4 Mr. Thurston at studio - Sees Somerville, "landscape and pose" color work - sphere, enamels, w.c. and crayons. Explains Theosophic ideas of "aura" good and bad. 53a.

5 I call on Mr. Howland at store and ask him if 4% royalty is not meagre as compared with 15-20 on other materials?
Says 12 boxes must job for 2.81 - 3.15
retail " 4.20 - single box .35
to compete. May have to reduce price. Says he does not make more than that himself (02).
I ask to have it reconsidered.

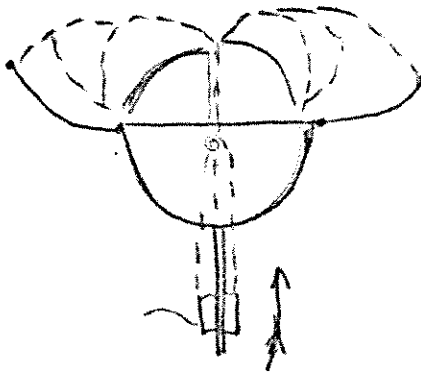
June 12 At studio 4-5:30
Mr. M.J.Ahern, S.J. - colleague - Miss O'Connor and Miss H.J.Davis see color tree, photometer, colorsphere, charts and school work. 54.



- 54a.
- A- shaft geared or frictioned to drivers.
 - B.C. Color cards on spring stems.
 - D. Color field - fixed (obscured when cards are vertical.)
 - E. Deflection of color cards at high speed, exposing color field in proportion to the rate of speed.



- Closed - green only
- Opening - disclosed a red interior
- Open wide - red only



3 or more petals with spring and weight - registering speed on card.

- Sept 17 Studio 4-5 Miss Melzard and Miss Morton - Chelsea schools - To ask about notation (chromas) How middle colors are obtained - Why "orange" is left out. 54.
- Oct 4 G. H. Ellis & Co 272 Congress St.
Left MSS of 2nd Edition (in loose proof of book)
5 plates - for colored frontispiece
25 cuts - to insert in text (5 more to be made)
Cost of 1000 copies new edition - 365.44
Pd W & H Co. 85. pd. for plates
new cuts (Geo.H.Walker)
- Mr. Putnam calls to talk over the color work-
Asks how to get Sargent "straight and out".
Says Cochrane acknowledges my work the best and most scientific yet.
Says Haney does not seem resentful of the criticism.
- Oct 5 At M.N.A.S. - Miss Patterson calls to see about having the 3 lectures before the Teachers Club - as Sargent does not want them - Tells Miss Potter's "order" not to use the color crayons, and Hopkins' refutation of her statements.
- Oct 14 Studio 12-3 Louis G. Monte- Goes to lunch, then returns to see charts, tree, school work, etc. Wishes me to come up and lecture at Westfield Normal School. Tells of summer in Europe - meeting Loeser, Gamba, Sorella and others. 55.
- Studio 3-3:30 - Arthur W. Dow - Teachers' College, NY- Wishes a course of 3 lectures (Horace Mann School (Manual Training (Physics Dept. (Speyer School
- Asks where to use crayons and) 1-5
water colors -) 5-8
- Oct 15 Mr. Gunnison telephones that Prang's agent (Fraser) is spreading a statement that Miss Patrick has had to give up the Munsell system - which is false, - she being more enthusiastic than ever as to its superiority over all other systems. (Has 16 copies of the book in stock.)
- Tel. Mr. Pritchard who says Fraser told him my system was not adopted in any city - too complicated and revolutionary, but did not mention Miss Patrick.
- Oct 29 Miss Gulliver telephones to ask about lectures to the Boston Teachers' Club.

- Nov 2 Showed Mr. Howland and Mr. Gunnison that 3 of the new batch of water colors need correction. Emphasize necessity of testing each batch before letting it be made up.
- 6 11:30-L Mr. Harry W. Morse of the Jefferson Lab. Harvard - Brings Dr. Ostwald's book - and his new spectroscope (nicol and scale). Sees Dutch studies and I give him copy of Color Notation.
- 18 Frazier (Prang Ed. Co) telephones about Miss Patrick's letter - and I advise him to write a courteous apology. Tell him it is a question of truth and the golden rule: - not of business. Next day he calls upon me at the N.A.S. - talks loosely - and I tell him I haven't time to correct his mistakes - but as a gentleman he should apologize for injury done to - and misrepresentation of - Miss Patrick. Also say I do not believe Mr. Cochrane wishes him to employ such methods.

Dec 23 Mr. Putnam calls to suggest summer school course in my color system (Chicago) and leaves letter by Favor Ruhl & Co.

 First Galley proofs of 2nd edition - Oct. 10-11-14 55a.
 6 new cuts - \$3.66
 2 " " 2.
 Returned Oct. 16 with cuts - 2nd page proof
 Oct. 29.

Jan 2 Miss Chumard (B.02) brings Miss Clement to studio. 56.
 1908 Wrote Mr. C. A. Brodeur - Prin. Westfield Normal School.

3 lectures (1. Color Measures vs Color Guesses -
 (Tests of color vision
 (2. Color records - and memorization of
 (color groups - a notation
 (3. Color design - decorative and picturesque,
 (steps in training the color sense,

Jan 10 10-11 In Mr. Turner's office - Pope Bldg. to see Lumiere plate. I compare old ideas of primaries with new. Explain apparent contradiction in pigment mixture - " spectrum proof of R, G, VB (also color-blindS)
 Retinal net work of R G & VB
 fatigue of one set of nerves - produces temporary blindness -
 and the other nerves produce complementary sensations.

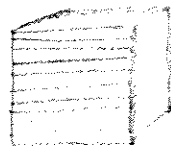
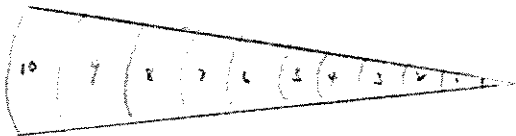
- Jan 14 M.N.A.S. 10:30-12 1st color lecture -
"Color Guesses vs Color Measures."
- 19 Library - C.H. Mr. Allen returns 3 color charts.
 Lithographers claim they can make them, but by
 discarding 4 in 5.
 Mr. A. suggests a stencil; each color to be brushed
 in - I then ask if large sheets 22x28 - if my
 enamels cannot better be cut by dies and the
 colors pasted on a printed diagram?
- 28 M.N.A.S. 10:30-12 2nd color lecture - Color
Balance and Color Records.
- Feb 5 After looking over proof - Mr. Finlay decides to
 call for new plates.
- 20 Rec. Royalty acct. and cheque from W. H. & Co.
 Also letter from Chicago kindergarten Institute
 asking for (Color Tree
 (Color Charts
 (Colored Papers (not enamels)
- 21 Took Color Tree and Skeleton Sphere to Mr. Perkins
 to consider if they infringe on the color sphere
 patent and if any further protection is needed.

Jan 7 Miss Batchelder and Miss Hathaway call my
 attention to crayons that have swerved from
 the middle colors.

56a.

Why is a gray made of complements - a satisfactory
 test? Will this be (-) overthrown by a newer
 theory?

10 dies @ 30 - 30



filing cabinet
 of ten shelves -
 each a level of
 value.

- Feb 24 Noon. Took Color Tree to W & H - Showing it to
 Mr. Howland and Mr. Gunnison -
 3 p.m. Mr. Putnam calls. Wants public lecture
 on the System. (W & H would give a lunch.)
 Has seen Miller Copeland and Mason in Phila.
 Miss Curtis - in Brooklyn
 Mr. Hopkins - Baltimore
 Mr. Daniels, Monte, Richards, Andrews,
 Hunt, etc. in Mass.

58.